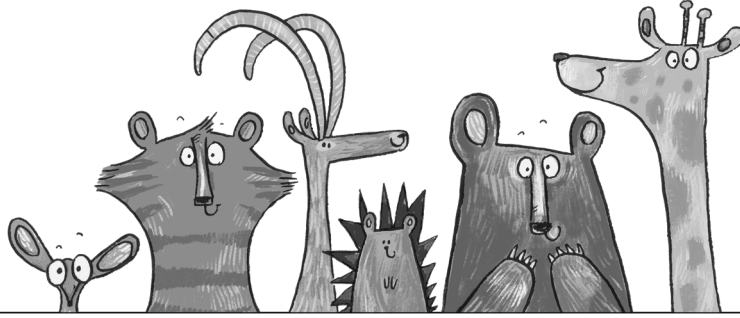


Name:

Date:

Score:



Questions may need to be read by an adult.

# Harry the Clever Spider at School

|   |  |  |
|---|--|--|
| 1 | Who is Harry's owner?                        |  |
| 2 | Who is Miss Bradley?                         |  |
| 3 | What does Miss Bradley lose?                 |  |
| 4 | What does Harry do when Clare opens the lid? |  |
| 5 | What does Harry find behind the cupboard?    |  |

